

Filtering ventilation safety cabinets



▲ AF2C
+ CORG301

INCLUDED :

- Filtration system tested according to NF X 15-211
- ➔ **SECURITY FOR USERS**
- Perforated shelves : 4 for p/n AF2C ; 8 half for /n AF22C
- ➔ **LEAKAGE GOES DIRECTLY INTO THE CONTAINMENT SUMP**
- Containment sump : 1 for p/n AF2C ; 2 for p/n AF22C
- ➔ **RETRIEVAL OF THE LEAKS**
- Activated carbon filter with high efficiency
- ➔ **THE SOLUTION FOR STORING CHEMICALS**
- Locking system
- ➔ **PROTECTED AGAINST MALICIOUS ACTS**
- Normalized labeling
- ➔ **IDENTIFIED DANGER**
- Glazed door
- ➔ **IMMEDIATE VISIBILITY OF YOURS STORED PRODUCTS**



Description	P/N	Dimensions H x W x D (mm)
Filtration cabinet 1 compartment	AF2C	1900 x 800 x 545
Filtration cabinet 2 compartments	AF22C	1900 x 800 x 545
Activated carbon filter for organic and corrosive vapors	CORG301	70 x 730 x 380



▲ AF22C
+ CORG301

FOR AVAILABILITY ON OTHER MODELS, PLEASE CONTACT US.

Modulable multirisks safety cabinets



A2PCA ▲

INCLUDED :

- Retention shelves adjustable in height
- ➔ **PROTECTION AGAINST LOCAL LEAK**
- Locking system
- ➔ **PROTECTED AGAINST MALICIOUS ACTS**
- Normalized labeling
- ➔ **IDENTIFIED DANGER**
- Air inlet and outlet
- ➔ **POSSIBILITY OF FORCED VENTILATION OR FILTRATION SYSTEM**
- Containment sump at the bottom of each compartment
- ➔ **RETRIEVAL OF THE LEAKS**



Description	P/N	Dimensions H x W x D (mm)
Safety cabinet 2 compartments	A2PCA	1825 x 560 x 545
Safety cabinet 3 compartments	A3PCA	1825 x 560 x 545
Filtration box	CDF-ACORG	310 x 505 x 485
Connecting kit	KRC	1 kit per box
Replacement filter	CDFCORG	H 150 x diam. 150



▲ A3PCA

CDF-ACORG ▶



Questions that need to be asked :

Cabinets :

- Do you have any chemicals or dangerous products ?
- If so, which quantity of each chemical's family (flammable, toxic, corrosive) ?
- How do you currently store them ?
- What available dimensions do you have ?
- Do users complain about smellings ?
- If so, would a filtration air box needed for the cabinet.

Fume Hoods :

- How do you manipulate your chemicals ?
- Where do you want your ductless fume hood to be settled ? On a dedicated bench, on a new table ?
- What is your requested size ?
- Which products do you manipulate ? Liquids ? Powders ? Both ?

To find the right cabinet or the right fume hood for your needs, please ask Ecosafe or your usual reseller for advices.

Indication on Regulations:

For the Safety Cabinets:

FM : Offers worldwide industrial and commercial product certification and testing services throught its business unit FM Approuvals. recognized and respected across the globe, FM approvals certification assures customers that a product has been objectively tested and conforms to the highest national standards. The FM certification requires a fire-resistance of 10 minutes for Safety Cabinets, according to the heating curve NFPA 251-1969.

EN 14470-1 : it is applicable for storage of flammable and highly flammable chemicals in a laboratory. The flammables used in laboratories must be stored in one or several safety cabinets wich are fire resistant 15 (minimum required), 30, 60 or 90 minutes.

For the Ductless Fume Hoods

The French norm (NF X 15-211) is the most demanding regulation today. It guarantees to the use a full safety allowing the user to focus on his manipulations.

PRODUCT SELECTION FOR THE LABORATORIES

Safety Cabinets
Ductless fume hoods
Ventilation and filtration systems



ECOSAFE
www.ecosafesa.com

YOUR ECOSAFE RESELLER:

www.imlab.eu
info@imlab.be - Tel. : +32 (0)16 73 55 72

imLab

www.imlab.eu
info@imlab.fr - Tél. : +33 (0)3 20 55 19 11

EN 14470-1 & FM 6050 Safety Cabinets type 30 min



3035PVE

EN 14470-1



- INCLUDED :**
- Tested and approved according to EN 14470-1 and FM 6050
 - ➔ **30 MINUTE FIRE RESISTANCE**
 - Containment shelves and sump
 - ➔ **PROTECTED AGAINST LOCAL LEAK**
 - Locking system
 - ➔ **PROTECTED AGAINST MALICIOUS ACTS**
 - Normalized labeling
 - ➔ **IDENTIFIED DANGER**
 - Air inlet and outlet
 - ➔ **POSSIBILITY OF FORCED VENTILATION OR FILTRATION SYSTEM**



Description	P/N	Dimensions H x W x D (mm)
Glazed cabinet for flammable products	3035PVE	1980 x 1115 x 550
Cabinet for flammable products	3035E	1980 x 1115 x 550
Ventilation box	CDV-A	235 x 235 x 250
Connecting kit	KRC	1 kit per box



3035E



CDV-A

FOR AVAILABILITY ON OTHER MODELS, PLEASE CONTACT US.

EN 14470-1 & FM 6050 Safety Cabinets type 90 min



795E

EN 14470-1



- INCLUDED :**
- Tested and approved according to EN 14470-1 and FM 6050
 - ➔ **105 MINUTE FIRE RESISTANCE**
 - Containment shelves and sump
 - ➔ **PROTECTED AGAINST LOCAL LEAK**
 - Locking system
 - ➔ **PROTECTED AGAINST MALICIOUS ACTS**
 - Normalized labeling
 - ➔ **IDENTIFIED DANGER**
 - Air inlet and outlet
 - ➔ **POSSIBILITY OF FORCED VENTILATION OR FILTRATION SYSTEM**

Description	P/N	Dimensions H x W x D (mm)
Cabinet for flammable products	795E	1880 x 1135 x 615
Cabinet for multirisks	795M22	1880 x 1135 x 615
Filtration box (filter not included)	H50C	310 x 505 x 485
Connecting kit	KRC	1 kit per box
Filter	CORG51	70 x 390 x 390



795M22



H50C + CORG51

Ductless Fume Hoods Labopur®



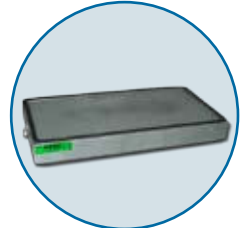
H122Z + TR12 + BB12 +
2 x (CORG 201 + SH200 + HEP200)

NF X 15-211
classe 2
mai 2009

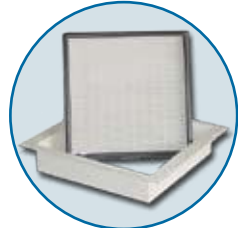
- INCLUDED :**
- Approved according to NF X 15-211 – May 2009
 - ➔ **SECURITY FOR USERS**
 - Work-top with containment sump
 - ➔ **STRENGTHENED SECURITY**
 - Glazed walls on all sides
 - ➔ **ENHANCED VISIBILITY OF THE WORKING AREA**
 - Delivered ready to use (already mounted)
 - ➔ **TIME SAVING**
 - Activated carbon filter
 - ➔ **THE EASY SOLUTION FOR USING CHEMICALS**



Description	P/N	Dimensions H x W x D (mm)
Ductless fume hood	H122Z	1160 x 1200 x 750
Trolley	TR12	860 x 1215 x 787
Activated carbon filter for corrosive vapors	CORG201 x 2	70 x 545 x 380
Work-top in melamine and containment sump	BB12	19 x 1145 x 700
HEPA filter H14	HEP200 x 2	68 x 305 x 305
HEPA filter holder	SH200 x 2	72 x 381 x 351



CORG201



SH200 +HEP200

FOR AVAILABILITY ON OTHER MODELS, PLEASE CONTACT US.

EN 14470-1 & FM 6050 Under bench safety cabinets type 90 min



791T



792T

- INCLUDED :**
- Tested and approved according to EN 14470-1 and FM 6050
 - ➔ **105 MINUTE FIRE RESISTANCE**
 - Containment sump
 - ➔ **PROTECTED AGAINST LOCAL LEAK**
 - Locking system
 - ➔ **PROTECTED AGAINST MALICIOUS ACTS**
 - Normalized labeling
 - ➔ **IDENTIFIED DANGER**
 - Air inlet and outlet
 - ➔ **POSSIBILITY OF FORCED VENTILATION OR FILTRATION SYSTEM**



Description	P/N	Dimensions H x W x D (mm)
Underbench cabinet	791T	670 x 635 x 615
Underbench cabinet	792T	670 x 1135 x 615
Filtration box (filter not included)	H40	670 x 270 x 460
Connecting kit	KRC	1 kit per box
Activated carbon filter for organic and corrosive vapors	CORGFC	100 x 200 x 400

H40 + CORGFC



* Other available models in 30 minutes, please contact us.

FOR AVAILABILITY ON OTHER MODELS, PLEASE CONTACT US.

Corrosion-proof safety cabinet for acids and bases



APC221

- INCLUDED :**
- Built in cellular PVC
 - ➔ **FOR THE BEST CORROSION RESISTANCE**
 - Separated compartments
 - ➔ **SEPARATION OF ACIDS AND BASES**
 - Containment shelves and sump on sliding rails
 - ➔ **PROTECTED AGAINST LOCAL LEAK**
 - Locking system
 - ➔ **PROTECTED AGAINST MALICIOUS ACTS**
 - Normalized labeling
 - ➔ **IDENTIFIED DANGER**
 - Air inlet and outlet
 - ➔ **POSSIBILITY OF FORCED VENTILATION OR FILTRATION SYSTEM**



Description	P/N	Dimensions H x W x D (mm)
3-compartment cabinet	APC106	1850 x 635 x 615
2-compartment cabinet	APC221	1850 x 1135 x 615
Filtration box	CDF-P	305 x 580 x 300
Connecting kit	KRC	1 kit per box
Replacement filter	CDFCORG	H 150 x diam. 150



CDF-P



APC106

Recycling air boxes Labopur®



H40 + CORGFC



H50C + CORG51

- INCLUDED :**
- Approved according to NF X 15-211 – May 2009
 - ➔ **SECURITY FOR USERS**
 - Filtration through an activated carbon filter
 - ➔ **STRENGTHENED SECURITY**
 - Easy replacement of the activated carbon filter
 - ➔ **TIME SAVING**
 - Several types of activated carbon filters, to choose in accordance with the stored products
 - ➔ **THE EASY SOLUTION FOR FILTERING CHEMICALS**



Description	P/N	Dimensions H x W x D (mm)
Underbench recycling air box (filter not included)	H40	670 x 270 x 460
Activated carbon filter for organic vapors for H40	ORGFC	100 x 200 x 400
Activated carbon filter for organic and corrosive vapors for H40	CORGFC	100 x 200 x 400
Activated carbon filter for formaldehyde vapors for H40	FORFC	100 x 200 x 400
Recycling air box (filter not included)	H50C	310 x 510 x 485
Activated carbon filter for organic vapors for H50	ORG50	70 x 390 x 390
Activated carbon filter for organic and corrosive vapors for H50	CORG51	70 x 390 x 390
Activated carbon filter for formaldehyde vapors for H50	FOR50	70 x 390 x 390
Connecting kit	KRC	1 kit per box